

Beiträge zum Alten Ägypten 10

Günther Lapp



VisualGlyph+ for PC

A Hieroglyphic Writing and Drawing System

Orientverlag

Beiträge zum Alten Ägypten (BAÄ) vol. 10:

Günther Lapp, *VisualGlyph+ for PC.*

A Hieroglyphic Writing and Drawing System.

BAÄ 10, Orientverlag, Basel 2021.

Paperback, 178 pages.

ISBN 978-3-905719-29-1

- *Book only*: € 45.- (plus shipping costs)

- *Program file only*: € 30.-

(the individual activation code will be sent by email and registered for your individual computer)

If you order both *book and program file*, the price of the *program* is reduced by 50% to € 15.- (total price book and program file: € 60.-).

For a *free trial version of the program* (fully functional, but input / output deactivated) visit our website: <http://orientverlag.ch/VisualGlyph-for-PC/>

In case of download or installation problems please contact: orientv3@orientverlag.ch.

(The exe-file can also be sent to you via WeTransfer)

Orders / contact: orientv3@orientverlag.ch

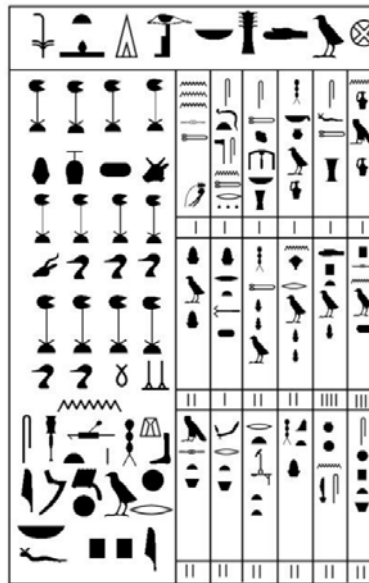
SUMMARY

This book is a manual for *VisualGlyph+ for PC*, a modern computer program for writing egyptian hieroglyphs (as well as a graphic and drawing system). Unlike other such programs it is not a script program, but uses a technique called WYSIWYG (w[hat] y[ou] s[ee] i[s] w[hat] y[ou] g[et]). It allows you to directly manipulate the contents of a document (e.g. text, graphics), make changes and move signs directly on your computer screen. You can also freely combine, alter and edit the signs or add your own, change colors, size, rotation angle, style (standard, bold, filled, outline) etc. In addition to the well-known Gardiner signs there are over 11'000 additional signs.

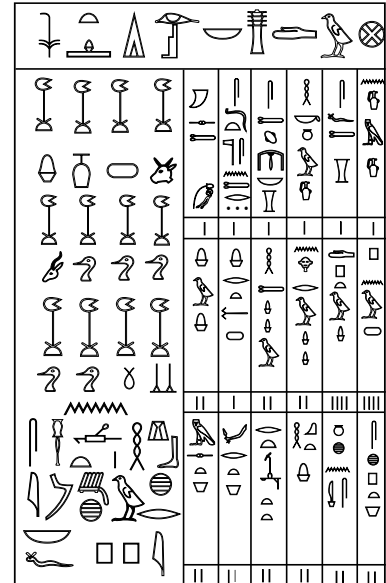
Example:



Original



Standard Bold and Filled
(written and drawn with VG+)



Standard Hieroglyphs
(written and drawn with VG+)

4.1.2 Glyph Properties



4.1.2.1 Font Size

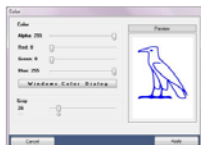
Font Size: 22 [22]
 Get > 22 < Set
 Title: Font Size 22 (22)
 22: Currently selected size (22): Standard size

The numeric up / down field allows you to select font sizes from 10 to 250. With the button [Set], you can set the currently selected size as the standard font size of your document; with the button [Get], the standard font size is displayed again in the numeric up / down field. The standard font size is used to position signs in rows or columns (see 7.1).

4.1.2.2 Glyph Color

Font Size: 22 [22]
 Get > 22 < Set

The two main colors in a hieroglyphic text are black and red. These can be selected directly. For any other color click the button [Color] to open the Color Dialog.



With the color window, the user can select any color (for ARGB color scheme see 8.2). The slider Gray allows you to pick a gray value directly.



If you are not familiar with the RGB color scheme (see 8.2), open the Windows Color Dialog by clicking the button [Windows Color Dialog]. Here you can set RGB values only. Once you have selected a color in that window, you can change the alpha value to define the transparency (8.2).

4.1.2.5 Styles of Hieroglyphs



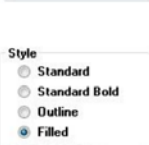
The hieroglyphs of VisualGlyph® are font signs. If you write your hieroglyphic text with the *Standard* style, then the signs are reproduced as font signs without alterations. This process is very fast.



Font signs consist of contours (closed curves, see 5.9.1). If you use *Standard Bold* style then the font signs are read by VisualGlyph® and the contours are drawn with the defined *Line Width* (values: 0.5 to 5).



If you use *Outline* style then the contours are drawn with the defined *Line Width* (values: 0.5 to 5).



If a filled hieroglyph is created, it appears as a black sign. You can activate contours, but you can't change their *Line Width*:



Filled *Filled with activated contours*

